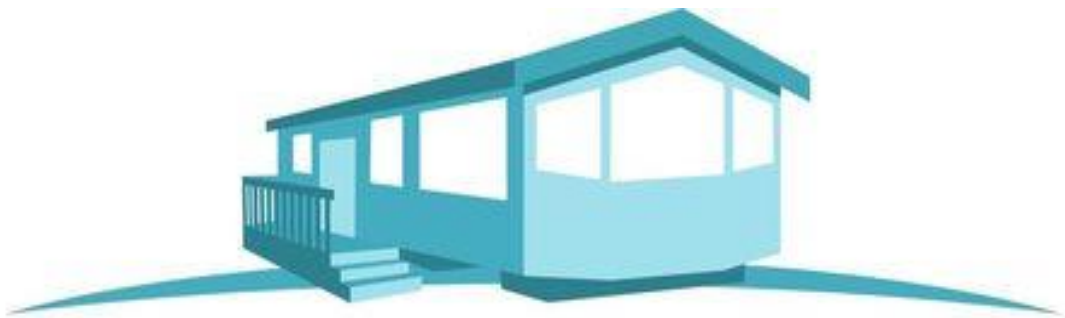




## **BOSTON WEST GOLF CLUB**

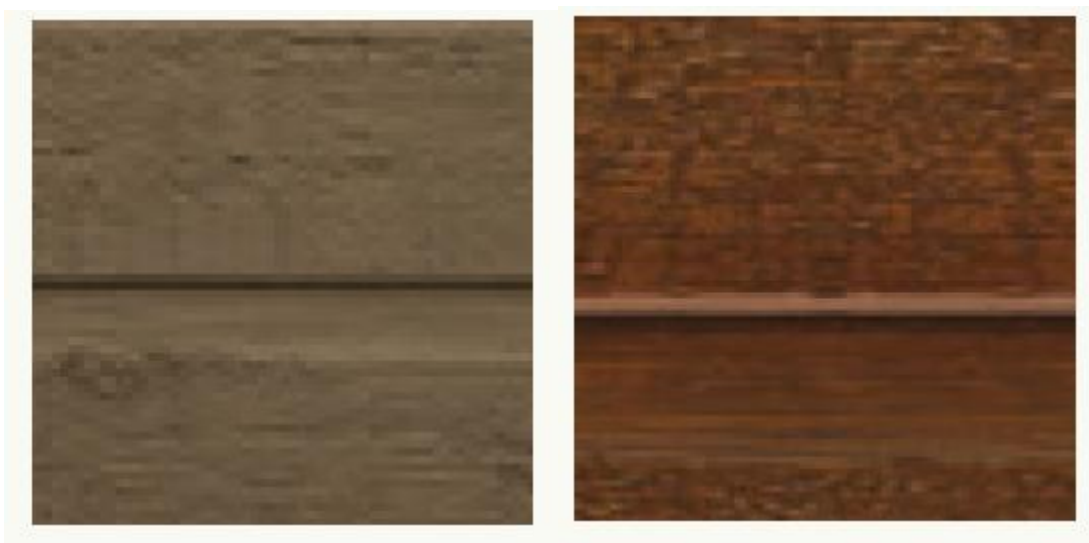


### **Phase 3 Base Development** **Details of the Type of Units to Be Sited**

# CLADDING COLOUR

## CANEXEL®

CanExel® is a high-density wood composite product created from oak, maple and birch. Its deeply textured wood grain appearance makes it the perfect choice for those who want all the beauty of genuine wood, but with added durability and minimal maintenance requirements.



**Walnut**

**Red Fox**



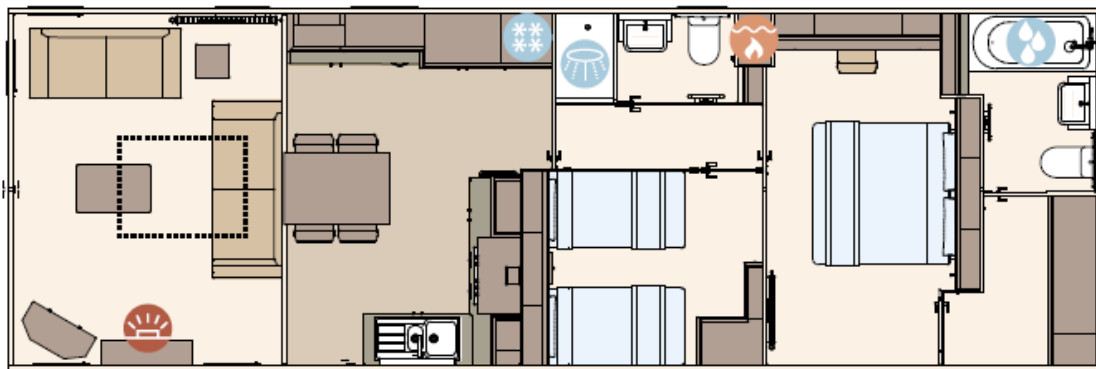
**Yellowstone**

**Barista**

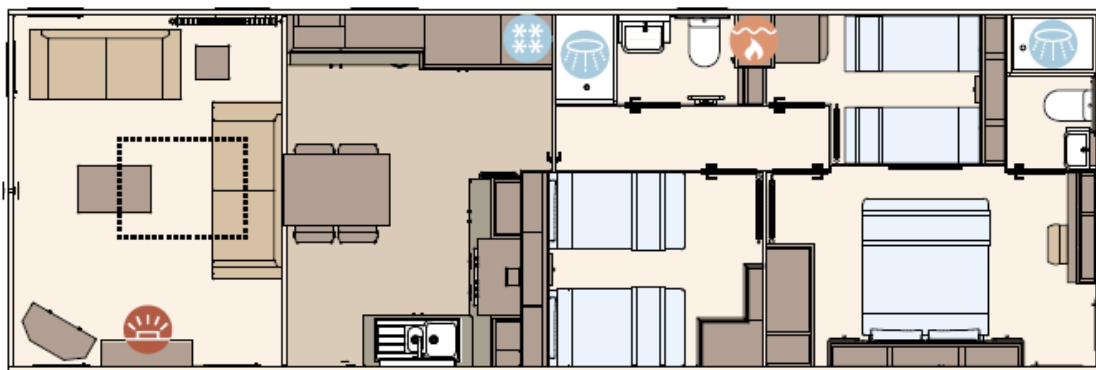
(Names may vary on the manufacturers website)



**ABI - The Beaumont 42ft x 14ft (Cladding to be timber effect as page 1)**



The Beaumont 42ft x 14ft x 2 bedroom



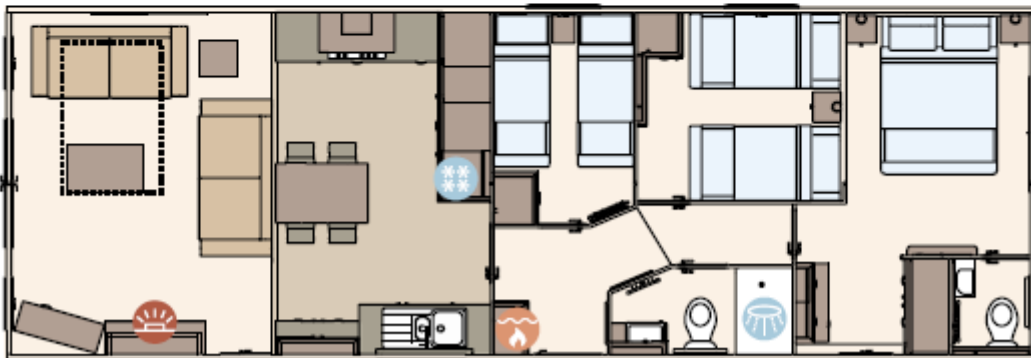
The Beaumont 42ft x 14ft x 3 bedroom



**ABI - The Ambleside 40ft x 14ft (Cladding to be timber effect as page 1)**



**The Ambleside Premier 40ft x 14ft x 2 bedroom**

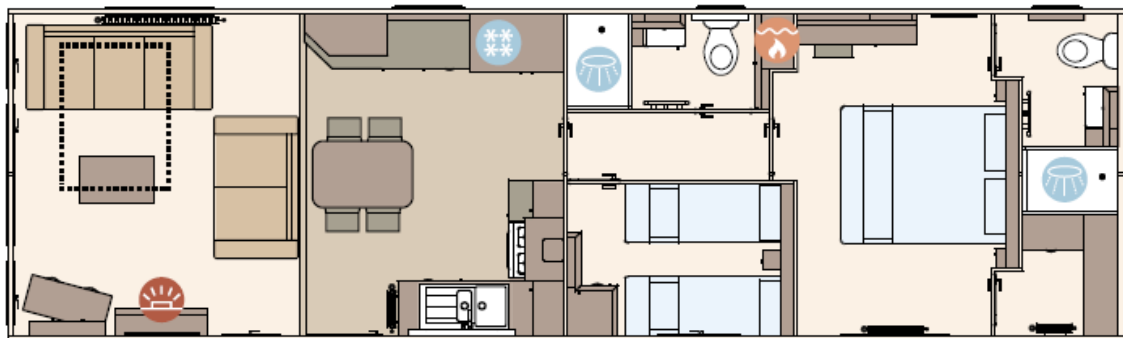


**The Ambleside Premier 41ft x 14ft x 3 bedroom**

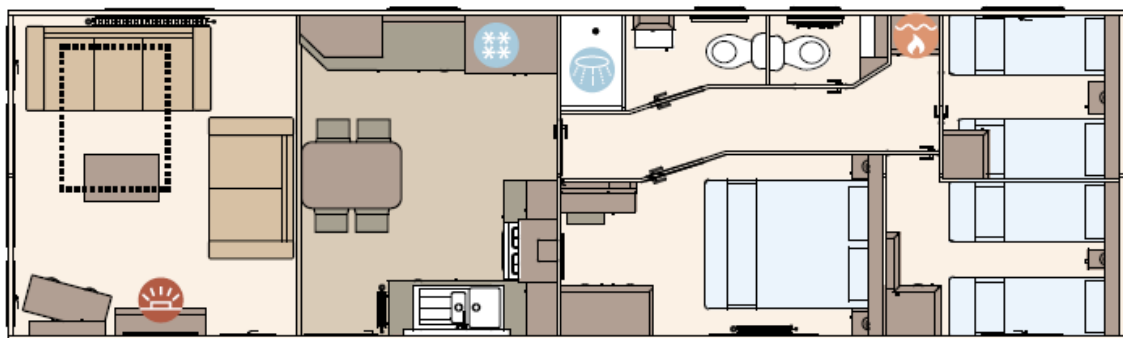




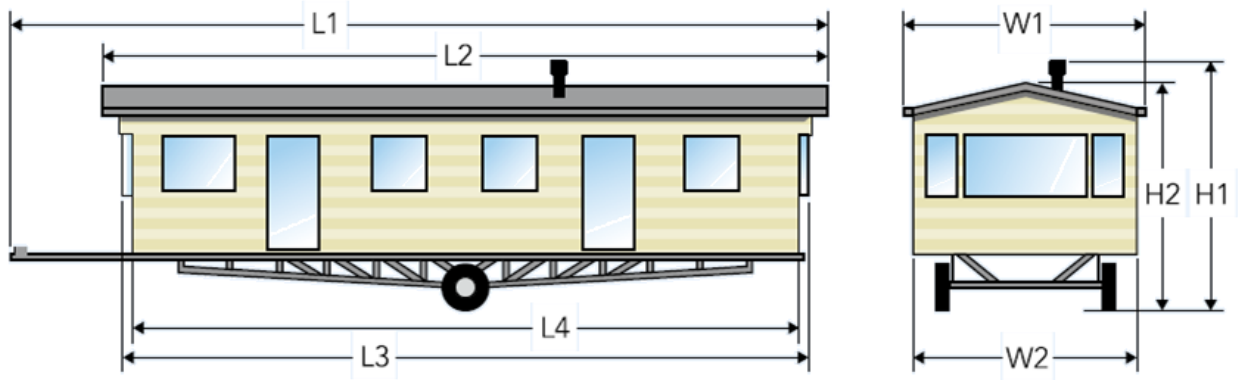
**ABI - The Windermere 40ft x 12ft (Cladding to be timber effect as page 1)**



The Windermere 40ft x 12ft x 2 bedroom



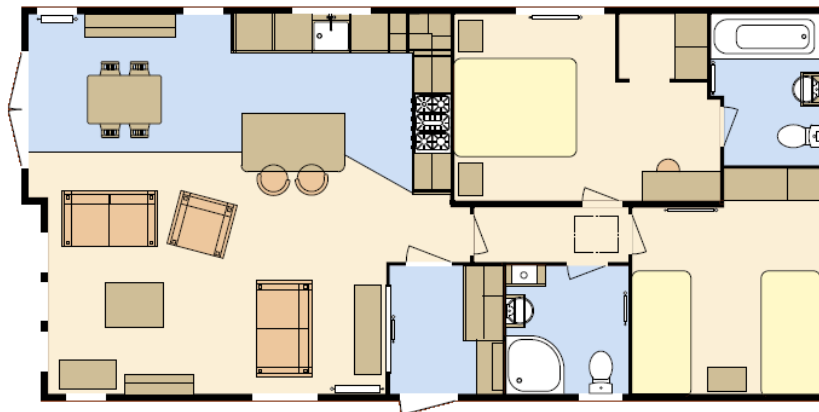
The Windermere 40ft x 12ft x 3 bedroom



	2'-0" x 6'-0" Single	2'-3" x 6'-0" Single	2'-6" x 6'-0" Single	3'-0" x 6'-0" Large Single	2'-6" x 6'-3" Long Single	3'-0" x 6'-3" Large Single	4'-6" x 6'-3" Large Double	5'-0" x 6'-3" Kingsize
<b>Debonair 7</b>								
36 x 12 – 2 bed/6 berth		●						●
38 x 12 – 2 bed/6 berth		●						●
38 x 12 – 3 bed/8 berth	●	●					●	
38 x 13 – 2 bed/6 berth			●					●
40 x 13 – 3 bed/8 berth			●				●	

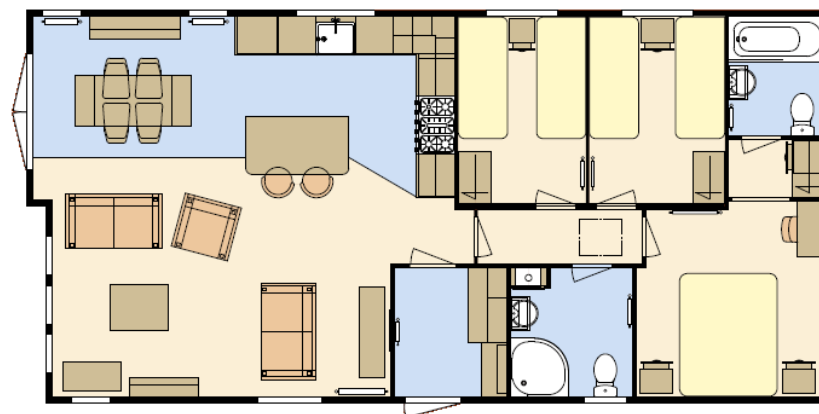


**Atlas - Debonair Lodge 40x20 (Cladding to be timber effect as page 1)**



Front French Doors

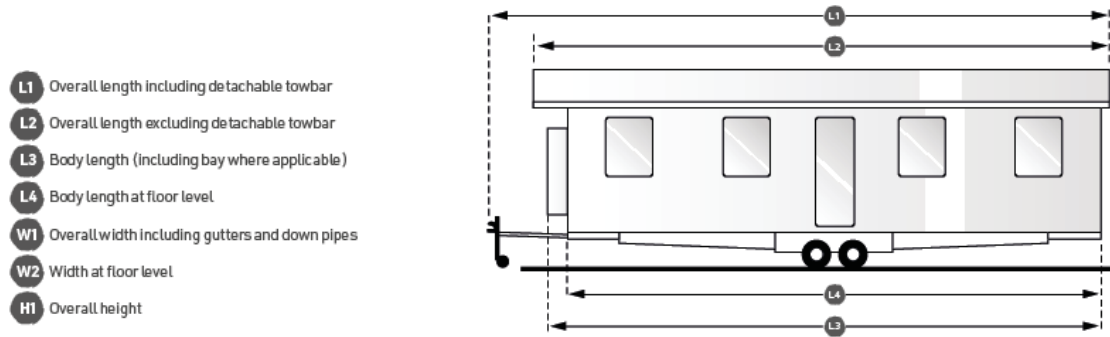
40x20 - 2 bedroom/4 berth



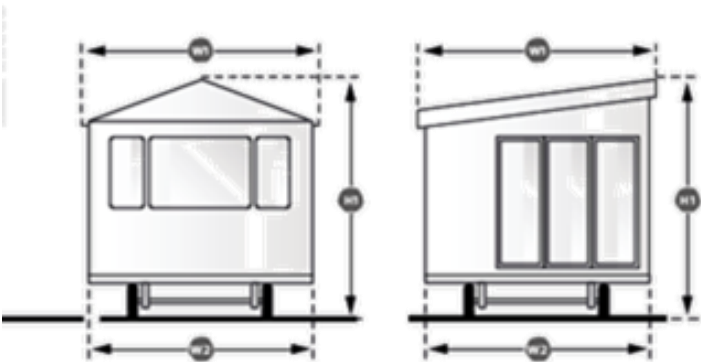
Front French Doors

40x20 - 3 bedroom/6 berth

# SWIFT LODGES



Model	L1	L2	L3	L4
Vendee Lodge 42x13-2 bed	13.57m (44'6")	13.15m (43'2")	12.77m (41'11")	12.77m (41'11")
Biarritz Lodge 40x13-2 bed	13.22m (43'4")	12.77m (41'11")	12.39m (40'8")	12.39m (40'8")



W1	W2	H1
4.29m (14'1")	4.01m (13'2")	3.75m (12'4")
4.29m (14'1")	4.01m (13'2")	3.60m (11'10")





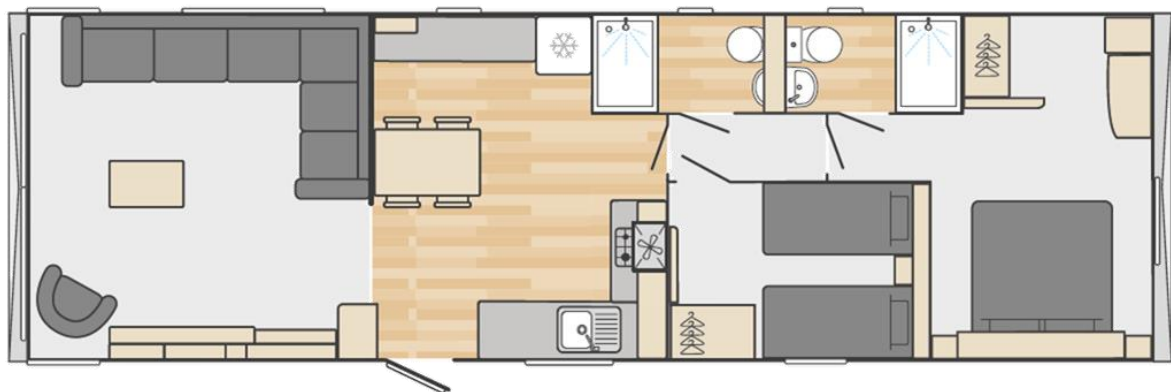
**Swift - Vendee Lodge 42x13 (Cladding to be timber effect as page 1)**



42' x 13' - 2 Bedroom



**Swift - Biarritz Lodge 40x13 (Cladding to be timber effect as page 1)**



**40' x 13' - 2 Bedroom**

## WILLERBY LODGES



	A	B	C
MODEL	LENGTH OF ROOF (MM)	MAX OVERALL HEIGHT (MM)	MAX OVERALL WIDTH (MM)
<b>CLEARWATER</b>			
36X20 • 2 BEDROOM	11739	4030	6620
40X20 • 2 BEDROOM	12965	4030	6620
40X20 • 3 BEDROOM	12965	4030	6620
<b>MAPLETON</b>			
40X20 • 2 BEDROOM	12682	4030	6132
40X20 • 3 BEDROOM	12682	4030	6132
<b>PINEHURST</b>			
40X20 • 2 BEDROOM	13165	4030	6620
40X20 • 3 BEDROOM	13165	4030	6620





**Willerby - Clearwater 40x20 (Cladding to be timber effect as page 1)**



**40 x 20 • 3 bedroom**



**Willerby - Mapleton 40x20 (Cladding to be timber effect as page 1)**



**40 x 20 • 3 bedroom**





**Willerby - Pinehurst 40x20 (Cladding to be timber effect as page 1)**



**40 x 20 • 3 bedroom**